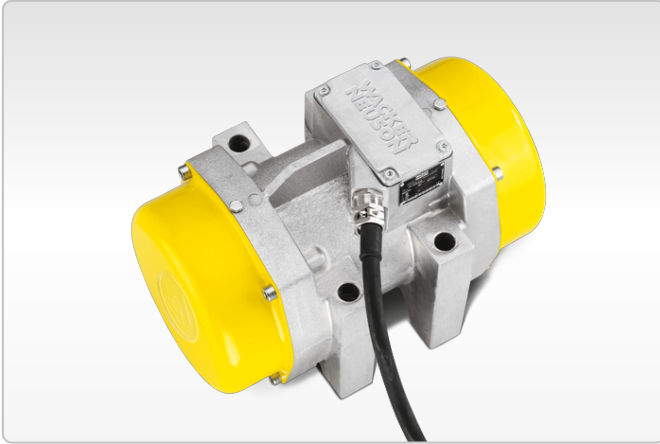




## AR75

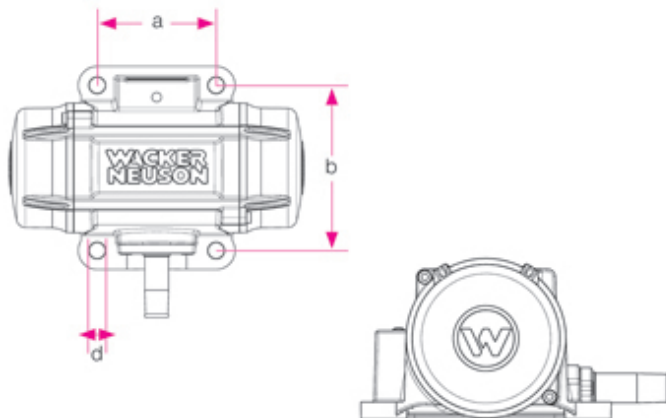
Concrete compaction in prefabricated concrete factories



### Great compaction performance: AR 75

The AR 75's strength is first-class compaction. It performs reliably and consistently even in the toughest operating conditions and constant 24-hour use. This is due to the vibration and heat resistant windings of the electric motor (plastic sealing, Class H up to 180 °C) as well as the extremely robust special bearings. Perfect for use with precast concrete elements.

- Excellent power-to-weight ratio.
- High operating reliability and long service life due to its extremely robust design
- Finely adjustable centrifugal forces via adjustable eccentric weight discs.
- Vibration resistant design
- Fastened with a flange



	d mm	a mm	b mm
AR/ARFU 26			
AR 36	11	90	125
AR 43			
AR 53	18	90	154
AR 34			
AR 54	17,5	120	120
AR 64			
AR 75	17	95	180



## Technical specifications

### 6,000 - 9,000 / min

	AR75/6/042	AR75/6/250	AR75/9/042	AR75/9/250
Vibrations rpm	6,000	6,000	9,000	9,000
Centrifugal force max. kN	26.56	26.56	26.38	26.38
Rated voltage 3~ V	42	250	42	250
Rated current A	32	7.5	28	4.3
Weight kg	26.8	26.8	27.5	27.5
Fastening	95 x 180	95 x 180	95 x 180	95 x 180

#### Please note

that product availability can vary from country to country. It is possible that information / products may not be available in your country. More detailed information on engine power can be found in the operator's manual; the stated power may vary due to specific operating conditions.

Subject to alterations and errors excepted. Applicable also to illustrations.

Copyright © 2015 Wacker Neuson SE.