



J-1160

J-1175

J-1480

JAW CRUSHERS



WORKS FOR YOU.™

FINLAY J-1160

The Terex Finlay J-1160 is a compact and aggressive tracked mobile primary jaw crusher. Incorporating the Terex Jaques JW40 jaw crusher a heavy duty VGF feeder and an integrated prescreen system the Finlay J-1160 gives optimum production in quarrying, mining, demolition and recycling applications.

Its compact size, quick set up times, ease of transport and user friendly operational features make the Finlay J-1160 ideal for all sized operators.

Product Conveyor

- u 900mm (36") Belt
- u 3.6m (10' 10") Discharge



Standard Features

Engine:

Tier 3: Caterpillar C9 Acert 224 kW (300hp) water cooled diesel engine

Tier 4i: Scania DC9 70A 202kW (275hp) water cooled diesel engine

Jaw Chamber:

Jaques 1000 x 660mm (40" x 24") single toggle jaw crusher

Hydrostatic drive and advanced electronic control system

Fully hydraulically adjustable closed side setting

Reversible operation for clearing blockages

S tooth liners - 18% Manganese as Standard

Hopper/Feeder

5m³ hopper (6.5 yd³)

Heavy duty vibrating feeder

Grizzly feeder with integrated pre-screen, standard 50mm (2") grizzly spacing

Selectable discharge to by-pass conveyor or main conveyor

Mesh aperture on grizzly feeder: 30mm (1.18")

Main Conveyor

900mm (35.4") wide main belt fitted with impact bars at feed point

High spec scraper at head drum

Piped for dust suppression complete with spraybars

General

Piped for overband magnet

Galvanised catwalk c/w handrail, kick board and access ladders

Heavy duty undercarriage unit with 400mm (15.7") wide pads

Handheld track control set with connection lead

Single speed tracks with 'soft start'

Safety guards in compliance with machinery directive

Emergency stops

Features:

- u The robust high performance hydrostatic driven single toggle jaw chamber provides high capacity with large reduction ratio's.
- u Automatic variable speed VGF ensures continuous choke feeding of the crushing chamber for optimal productivity.
- u High powered hydrostatic drive ensures precise chamber controls and reverse functionality for clearing blockages and assisting in demolition and recycling applications.
- u Fully hydraulic adjustable closed side setting minimises downtime and offers quick adjustment.



Powerunit

- u Tier 3: Caterpillar C9 Acert 224 kW (300hp)
- u Tier 4i: Scania DC9 70A 202kW (275hp)
- u Hydrostatic transmission
- u Electronic control system
- u Catwalk access

Catwalks

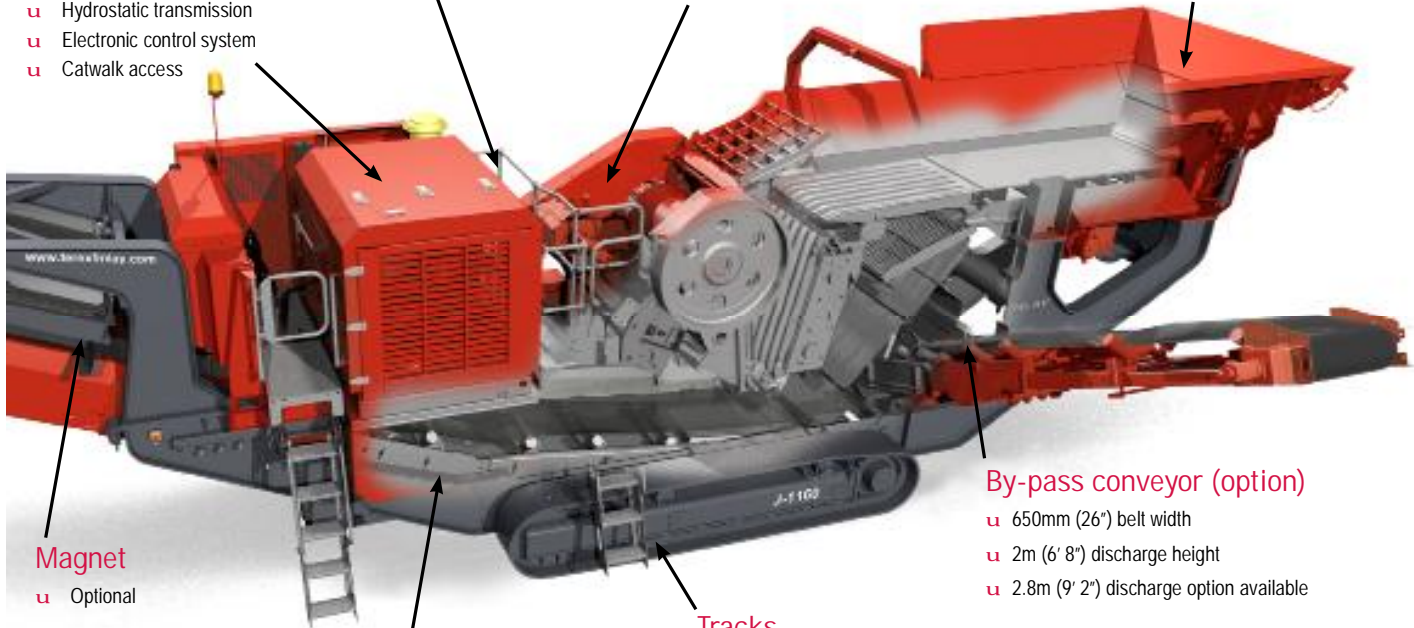
- u Powerunit and chamber access

Jaw Chamber

- u 1000x600mm" (40" x 24") inlet opening
- u Hydrostatic Drive with reverse feature for clearing blockages
- u Full Hydraulic CSS adjustment

Hopper and Feeder

- u 5m³ (6.5yd³) Capacity
- u 8m³ (10.4yd³) with optional extensions hydraulic folding



Magnet

- u Optional

By-pass conveyor (option)

- u 650mm (26") belt width
- u 2m (6' 8") discharge height
- u 2.8m (9' 2") discharge option available

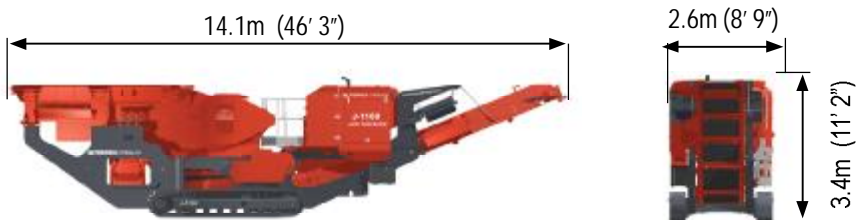
Tracks

- u 400mm (16") shoe width
- u 3.2m (10' 9") Sprocket centres

Chassis

- u Robust, heavy duty chassis

Transport Dimensions



Working Dimensions



Model Maximum Plant Capacity

TPH**	STPH**
350	386

**Material is based on Limestone with bulk density 1.6T/m³. Where available optional Pre-screen is used. Maximum capacity uses optimal mesh sizes and material conditions.

Machine Weight: 34800Kg (76720lbs) *

*Standard Machine configuration (Without By-Pass Conveyor or Magnet)

WORKS FOR YOU.™

FINLAY J-1175

The Terex Finlay J-1175 is a high performance tracked mobile jaw crusher. Incorporating the Terex Jaques JW42 jaw crusher and a heavy duty VGF feeder the Finlay J-1175 gives optimum production in a range of applications.

Its compact size, quick set up times, ease of transport and simple maintenance make the Finlay J-1175 ideal for quarrying, mining, demolition and recycling applications.

Standard Features

Engine:

Tier 3: Caterpillar C9 Acert 261 kW (350hp) water cooled diesel engine

Tier 4i: Stage 3B Scania DC9 70A 257kW (350hp) water cooled diesel engine

Jaw Chamber:

Jaques 1070 x 762mm (42" x 30") single toggle jaw crusher

Hydrostatic drive and advanced electronic control system

Fully hydraulically adjustable closed side setting

Reversible operation for clearing blockages

S tooth liners Standard - 18% Manganese as standard

Hopper/Feeder

9m³ hopper (11.7 yd³)

Hydraulically folding hopper sides

Heavy duty vibrating feeder

Integrated mesh screenbox below grizzly cassette is 75mm (2.95") spacing as standard

Selectable discharge to by-pass conveyor or main conveyor

Mesh aperture on grizzly feeder: 38mm (1.5")

Main Conveyor

1000mm (40") wide main belt fitted with impact bars at feed point

High spec scraper at head drum

Separate central operators panel

General

Piped for dust suppression complete with spraybars

Piped for overband magnet

Galvanised catwalk c/w handrail, kick board and access ladders

Heavy duty undercarriage unit with 500mm (19.7") wide pads

Hand held track control set with connection lead

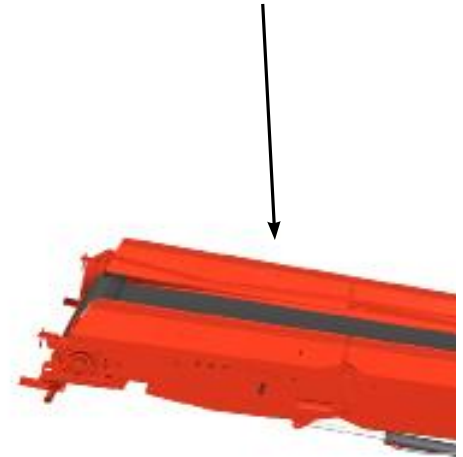
Two speed tracks with 'soft start'

Safety guards in compliance with machinery directive

Emergency stops

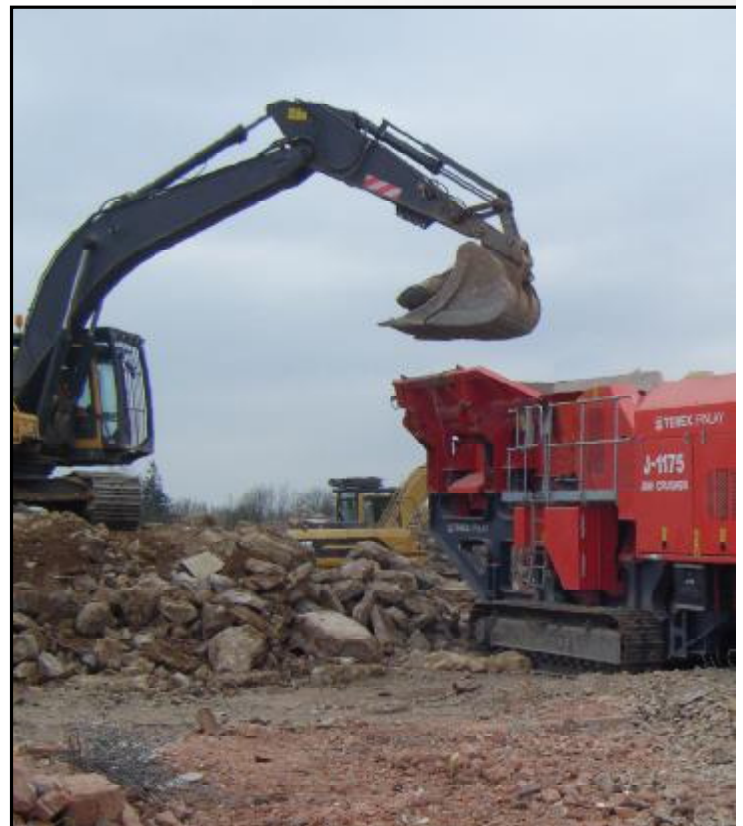
Main Conveyor

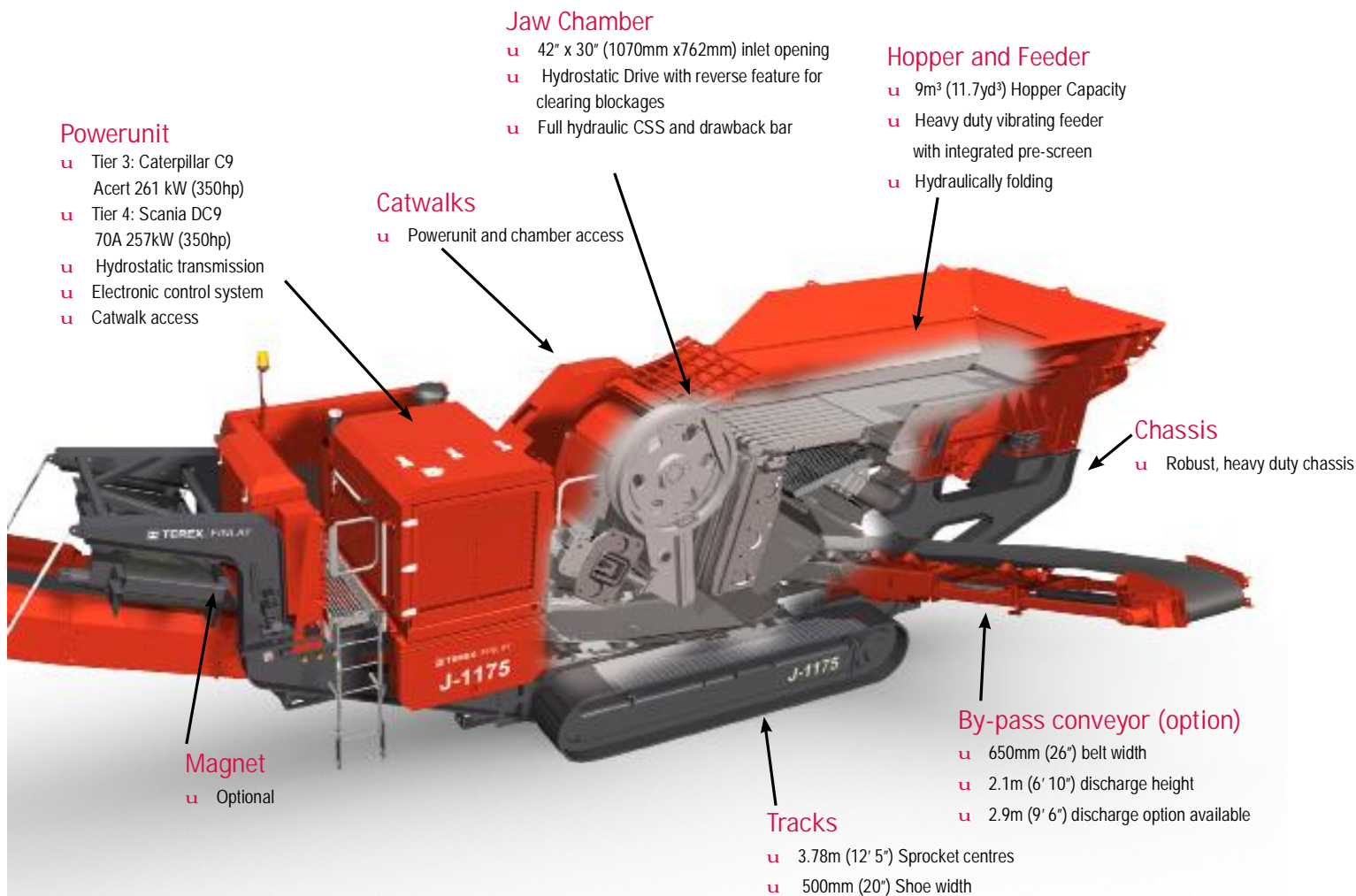
- u 1000mm 40" Belt width
- u 3.6m (12' 0") Discharge height
- u 4m (13' 2") Discharge option- illustr.
- u Hydraulic folding for transport



Features:

- u The robust high performance hydrostatically driven single toggle jaw chamber provides high capacity with large reduction ratio's.
- u Automatic variable speed VGF ensures continuous choke feeding of the crushing chamber for optimal productivity.
- u High powered hydrostatic drive ensures precise chamber controls and reverse functionality for clearing blockages and assisting in demolition and recycling applications.
- u Fully hydraulic closed side setting minimises downtime and offers quick adjustment.





Transport Dimensions



Working Dimensions



Model Maximum Plant Capacity

TPH**

475

STPH**

524

**Material is based on Limestone with bulk density 1.67/m³. Where available optional Pre-screen is used. Maximum capacity uses optimal mesh sizes and material conditions.

Machine Weight: 38300Kg (84437lbs) *

*Machine with optional Pre-screen fitted

WORKS FOR YOU.™

FINLAY J-1480

The Finlay J-1480 incorporates the Terex® Jaques JW55 single toggle jaw crusher which boasts a throughput capacity up to 750mtph depending on application and material. The machine is available with the optional direct drive which offers improved fuel efficiency and greater power utilisation or the standard hydrostatic drive which offers reversible operation for clearing blockages and for use in demolition applications. The large 10m³ hopper has hydraulically folding sides and hydraulic wedge clamp system providing faster machine set up time. The machine features a vibrating pan feeder and an aggressive independently driven pre-screen which provides optimum separation of dirt, fines and difficult materials.

Standard Features

Engine:

Caterpillar C13 328 kW (440hp) water cooled diesel engine

Jaw Chamber:

Jaques 1422mm x 813mm (56" x 32") single toggle jaw crusher

Hydrostatic drive and advanced electronic control system

Fully hydraulically adjustable closed side setting

Reversible operation for clearing blockages

Hopper/Feeder

10m³ hopper (13 yd³)

Heavy duty vibrating Pan & independent Pre-screen (100mm Standard spacing)

Mesh aperture on grizzly feeder: 38mm (1.49")

Selectable discharge to by-pass conveyor or main conveyor

Main Conveyor

1400mm (55") wide main belt fitted with impact bars at feed point

Skirting on discharge conveyor

High spec scraper at head drum

General

Dust suppression (no pump supplied) Main Conveyor fitted with hose & Spray bars as standard

Piped for overband magnet

Galvanised catwalk c/w handrail, kick board and access ladders

Heavy duty undercarriage unit with 500mm (19.7") wide pads

Control operation of tracks via hand held set with connection lead

Two speed tracks with 'soft start'

Guards to M & Q specification

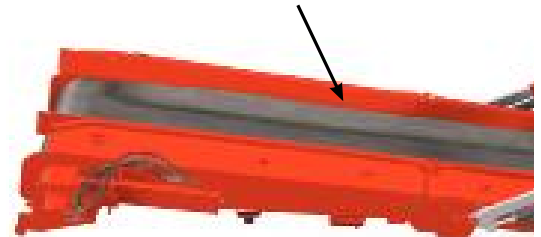
Low level greasing

Emergency stops (7 nr)

Electric refuelling pump

Main Conveyor

- 1400mm (55") Belt width
- 4.5m (14'9") discharge height
- High spec scraper at head drum
- Overband magnet option
- Hydraulic folding for transport
- Dust suppression system fitted as standard



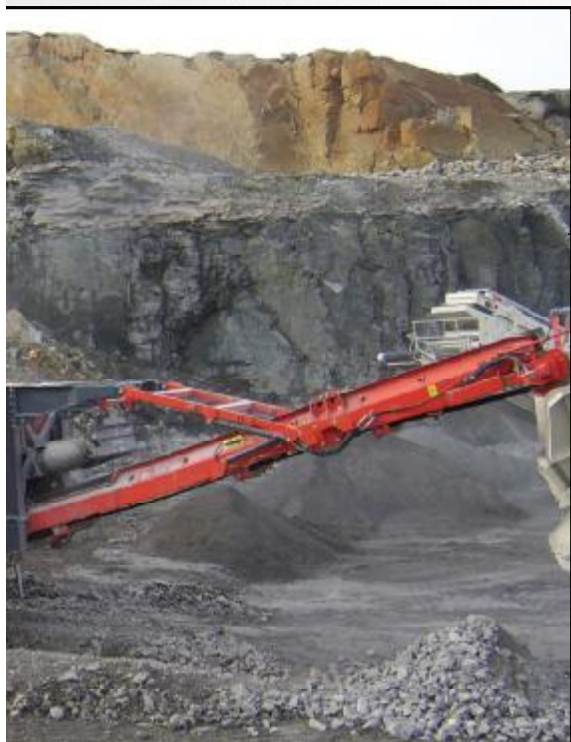
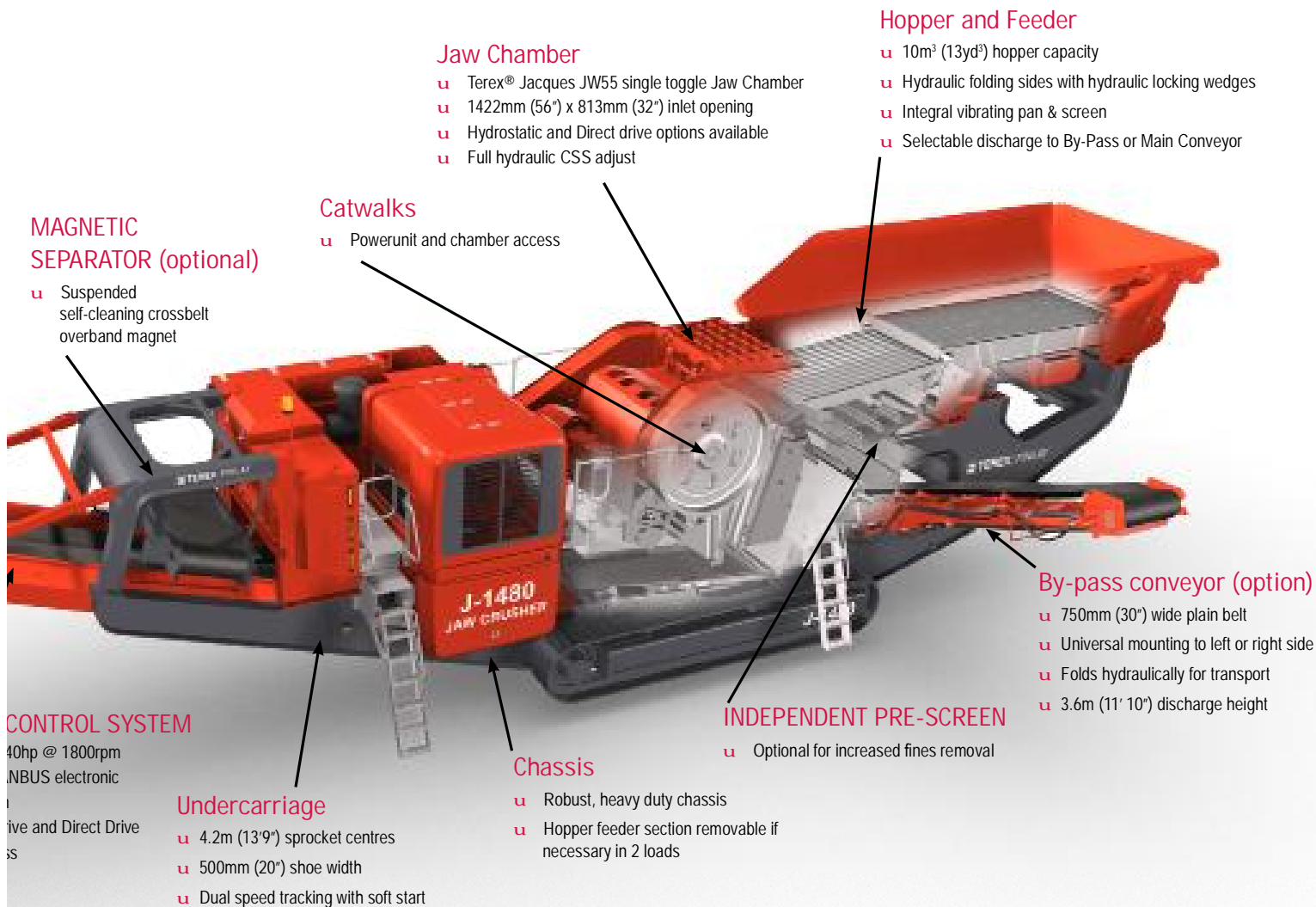
Features:

- Terex® Jaques Jaw with fully hydraulic adjustable closed side setting
- Hydrostatic & Direct drive systems with advanced electronic control system
- 10m³ (13yd³) hopper capacity. Optional hopper side extensions are available
- Independent VGF feeder and Pre-Screen
- Selectable discharge to by-pass conveyor or main conveyor

Power

- C
- A
- cc
- H
- C





Transport Dimensions



Working Dimensions



Model Maximum Plant Capacity

	TPH**	STPH**
	750	827

**Material is based on Limestone with bulk density 1.6T/m³. Where available optional Pre-screen is used. Maximum capacity uses optimal mesh sizes and material conditions.

Machine Weight: 70500kg (155423 lbs)**

** Note – Standard Machine configuration (Without By-Pass Conveyor or Magnet)

WORKS FOR YOU.™

www.terexfinlay.com

Effective 24.02.11, Product specifications and prices are subject to change without notice or obligation. The photographs and/or drawings in this document are for illustrative purposes only. Refer to the appropriate Operator's Manual for instructions on the proper use of this equipment. Failure to follow the appropriate Operator's Manual when using our equipment or to otherwise act irresponsibly may result in serious injury or death. The only warranty applicable to our equipment is the standard written warranty applicable to the particular product and sale and Terex makes no other warranty, express or implied. Products and services listed may be trademarks, service marks or trade-names of Terex Corporation and/or its subsidiaries in the USA and other countries. All rights are reserved. Terex® is a registered trademark of Terex Corporation in the USA and many other countries. Copyright 2010 Terex Corporation.



TEREX® | FINLAY

WORKS FOR YOU.™