

S 43 SX III

Truck-mounted concrete pump



Vertical reach		42.3 m
Concrete output	max.	162 m ³ /h
Pressure on concrete	max.	85 bar
Operating weight		< 32 t / < 70.500 lb



RECORD BREAKING ENGINEERING

The S 43 SX III from SCHWING

Ease without compromises

The 5-section boom of the S 43 SX III is extremely robust with incredible flexibility for different concrete placing jobs thanks to the Z-folding tip section with its 270° opening angle. The combination of proven SCHWING technology with continuous innovation has resulted in reliability, performance and ease of use without compromise. High pump power at low engine speed combined with the legendary durability of the ROCK valve enable the lowest operating and maintenance costs in this class. The S 43 SX III: unmatched flexibility and profitability.

Boom

The turret can be rotated 370° in both directions and the tip section can rotate 270° meaning that even the most demanding placement situations can be mastered effortlessly. Just two of the many advantages of the boom on the new S 43 SX III.



Pump kit

Only the SX outriggers by SCHWING allow the longstroke pump kit P2525 with 2.50 m long pumping cylinders to be used in this class of machine. Advantage: 20% less strokes than with pump kits otherwise available in this class.



Concrete valve

The legendary low wear ROCK valve with its optimal geometry for low-friction concrete flow ensures low service and operating costs. Being fast and easy to clean, the S 43 SX III is quickly ready for the next job.



Supply control

The water box can be filled and emptied, and the water pump, agitator, spray hose, high pressure jet wash and compressor, all controlled via the standardised supply control. This is the standard for all SCHWING truck-mounted concrete pumps for greater clarity and ease of operation.



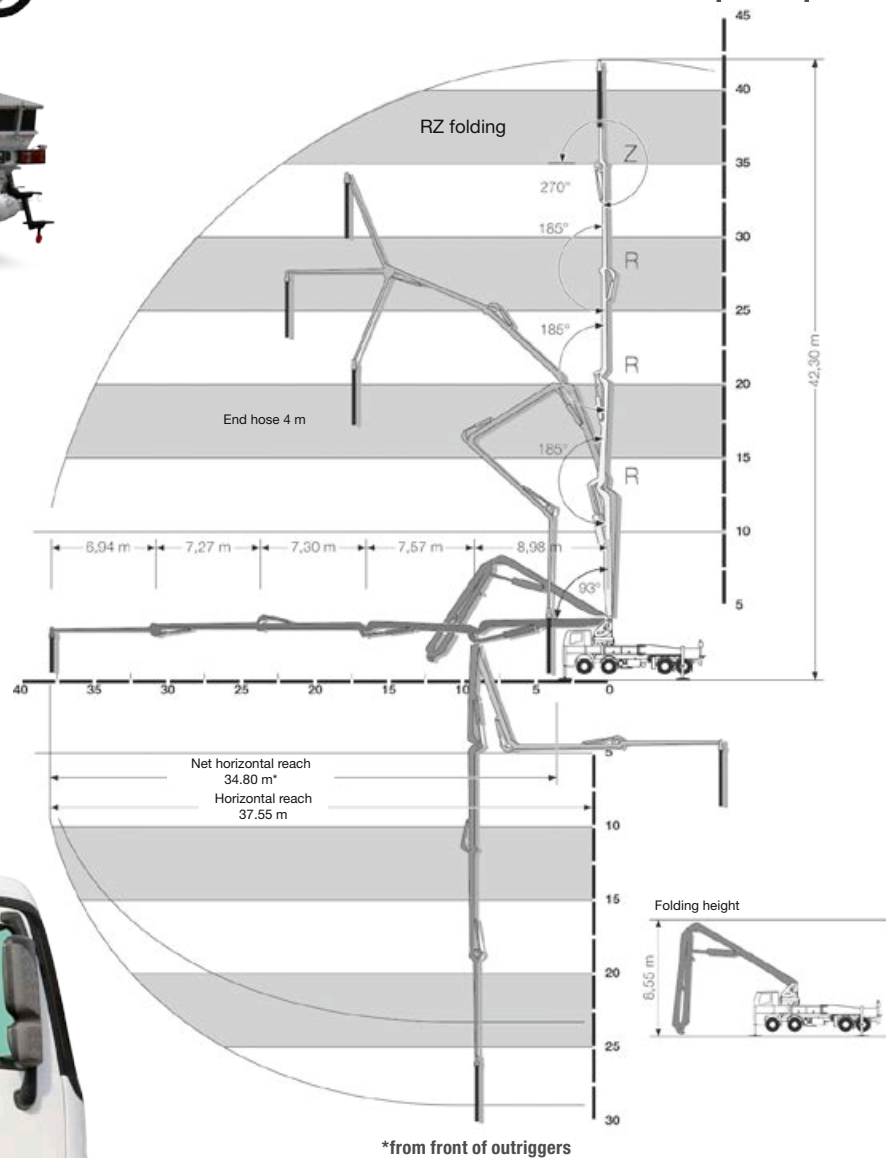
S 43 SX III

Truck-mounted concrete pump



Open hydraulic system

The open hydraulic system of the S 43 SX IIIr converts the engine power efficiently into pump power with little loss. Thus, the usual practice output rates can be realized with a fuel-saving engine speed below 1000 rpm.



← →
Centre distance < 1,800 mm

Remote control SC 30

The light weight, easy to use and comfortable SC 30 helps minimise fatigue, allowing the operator to focus on the job for extended periods. The powerful batteries guarantee an operating time of at least 8 hours.



SX outriggers

The SX outriggers developed by SCHWING combines high torsional rigidity and excellent stability with minimum space requirement. The protected piston rod and internally laid hydraulic cables prevent damage and reduce service costs. At the same time, the SCHWING SX outrigger is the only system which allows the installation of a low-wear long stroke pump kit P2525.



VECTOR control

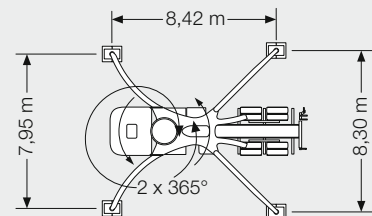
The machine operator can inspect machine data, operating conditions and settings on S 43 SX III, changing various parameters, all through the intuitive VECTOR control. The integrated diagnostic system ensures safe operation and also reminds the operator when maintenance is necessary.



S 43 SX III Truck-mounted concrete pump

Technical data

Performance				
Pump kit		P 2023-110/75	P 2023-110/75	P 2525
Drive	l/min	535	636	636
Delivery cylinders	mm	230 x 2,000	230 x 2,000	250 x 2,500
Concrete output max.	m ³ /h	136	161	162
Pressure on concrete max.	bar	85	85	85
Stroke rate max.	1/min.	27	32	22
Concrete valve		B-ROCK	B-ROCK	B-ROCK
Hydraulic system				
Design		open system		
Hydraulic tank	l	548		
Boom		43 RZ		
Delivery line		DN 125		
Length of end hose	m	4.00 (Option: 1.00 m + 3.00 m)		
Vertical reach	m	42.30		
Reach depth	m	29.90		
Horizontal reach	m	37.55		
Net horizontal reach	m	34.80 (from front of outriggers)		
Number of boom sections		5		
Height of the inflexion points	m	4.24 / 13.22 / 20.79 / 28.09 / 35.36		
Slewing range		2 x 365°		
Folding height	m	8.55		
Support				
Outrigger width, front	m	7.95		
Outrigger width, rear	m	8.30		
Outrigger load, front	kN	240		
Outrigger load, rear	kN	240		



SCHWING concrete pumps. Efficiency as standard.



SCHWING
Stetter

SCHWING GmbH
Heerstrasse 9-27 · 44653 Herne, Germany
Fon +49 23 25 - 987-0 · Fax +49 23 25 - 72922
www.schwing-stetter.com · info@schwing.de

Stetter GmbH
Dr.-Karl-Lenz-Strasse 70 · 87700 Memmingen, Germany
Fon +49 83 31 - 78-0 · Fax +49 83 31 - 78 275
www.schwing-stetter.com · info@stetter.de

Subject to technical and dimensional modifications. Illustrations are non-binding. The exact standard specification, the scope of delivery and the technical data are detailed in the offer.