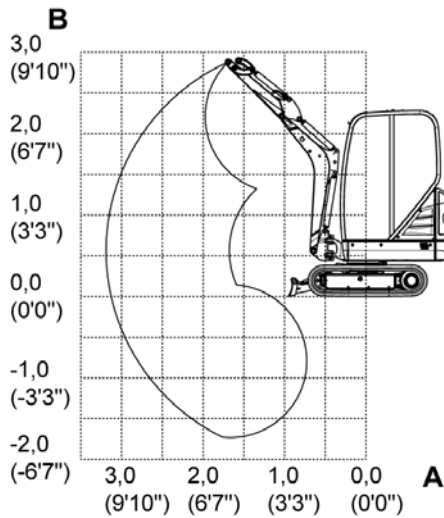




Lifting force tables 1404 RD canopy



All table values are specified in kg (lbs.), in a horizontal position on firm even ground as well as without a bucket or an attachment. Base of calculation: according to ISO 10567.

Set pressure at the lifting arm cylinder: 20,000 kPa (2,900 psi)

The lifting force of the vehicle is limited by the hydraulic capacity or by the tilting safety mechanism.

Neither 75% of the static tipping load nor 87% of the hydraulic lifting force are exceeded.

The lifting capability applies under the following conditions:

- Lubricants and operating materials at the prescribed levels.
- Full fuel tank.
- Vehicle at operating temperature.
- Weight of the operator: 75 kg (165 lbs.).

Fig. 1: Lifting force table 1404 canopy

max	Permissible load with extended dipper stick
A	Outreach from center of rotating ring
B	Load hook height
*	Lifting force limited by hydraulics

A	Max.			3.0 m (9'10")			2.0 m (6'7")		
	Above plate		Above the side 360°	Above plate		Above the side 360°	Above plate		Above the side 360°
	lowered	lifted		lowered	lifted		lowered	lifted	
1.5 m (4'11")	395* (871*)	180 (397)	170 (375)	400* (882*)	180 (397)	175 (386)	430* (948*)	330 (728)	315 (694)
1.0 m (3'3")	380* (838*)	165 (364)	155 (342)	405* (893*)	180 (397)	170 (375)	615* (1356)	315 (695)	300 (661)
0.5 m (1'8")	365* (805*)	160 (353)	155 (342)	410* (904*)	175 (386)	165 (364)	725* (1598*)	295 (650)	280 (617)
0.0 m (0'0")	350* (772*)	165 (364)	155 (342)	385* (849*)	170 (375)	165 (364)	715* (1576*)	285 (628)	270 (595)

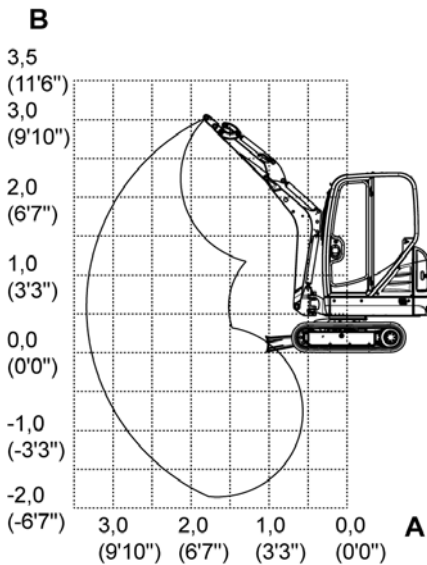
Tab. 1: Lifting force tables 1404 – Canopy and standard travel gear

A	Max.			3.0 m (9'10")			2.0 m (6'7")		
	Above plate		Above the side 360°	Above plate		Above the side 360°	Above plate		Above the side 360°
	lowered	lifted		lowered	lifted		lowered	lifted	
1.5 m (4'11")	390* (860*)	170 (375)	160 (353)	415* (915*)	185 (408)	175 (386)	375* (827*)	355 (783)	335 (737)
1.0 m (3'3")	375* (827*)	155 (342)	150 (330)	425* (937*)	175 (386)	170 (375)	575* (1268)	325 (717)	305 (672)
0.5 m (1'8")	360* (794*)	150 (331)	145 (320)	410* (904*)	170 (375)	165 (364)	695* (1532*)	290 (639)	275 (606)
0.0 m (0'0")	345* (761*)	155 (342)	145 (320)	400* (882*)	190 (419)	180 (397)	695* (1532*)	270 (595)	255 (562)

Tab. 2: Lifting force tables 1404 – Canopy and standard travel gear, with long dipper stick



Lifting force tables 1404 RD cabin



All table values are specified in kg (lbs.), in a horizontal position on firm even ground as well as without a bucket or an attachment. Base of calculation: according to ISO 10567.

Set pressure at the lifting arm cylinder: 20,000 kPa (2,900 psi)

The lifting force of the vehicle is limited by the hydraulic capacity or by the tilting safety mechanism.

Neither 75% of the static tipping load nor 87% of the hydraulic lifting force are exceeded.

The lifting capability applies under the following conditions:

- Lubricants and operating materials at the prescribed levels.
- Full fuel tank.
- Vehicle at operating temperature.
- Weight of the operator: 75 kg (165 lbs.).

Fig. 2: Lifting force table 1404 cabin

max	Permissible load with extended dipper stick
A	Outreach from center of rotating ring
B	Load hook height
*	Lifting force limited by hydraulics

A	Max.				3.0 m (9'10")				2.0 m (6'7")			
	Above plate		Above the side 360°		Above plate		Above the side 360°		Above plate		Above the side 360°	
	lowered	lifted	Telescopic travel gear retracted	Telescopic travel gear extended	lowered	lifted	Telescopic travel gear retracted	Telescopic travel gear extended	lowered	lifted	Telescopic travel gear retracted	Telescopic travel gear extended
1.5 m (4'11")	395* (871*)	215 (474)	205 (452)	295 (650)	400* (882*)	220 (485)	210 (463)	300 (661)	430* (948*)	390 (860)	375 (827)	545 (1202)
1.0 m (3'3")	380* (838*)	200 (441)	195 (430)	275 (606)	405* (893*)	215 (474)	210 (463)	295 (650)	615* (1356)	370 (816)	360 (794)	525 (1157)
0.5 m (1'8")	365* (805*)	195 (430)	190 (419)	270 (595)	410* (904*)	210 (463)	205 (452)	290 (639)	725* (1598*)	355 (783)	345 (761)	505 (1113)
0.0 m (0'0")	350* (772*)	195 (430)	190 (419)	275 (606)	385* (849*)	205 (451)	200 (441)	300 (661)	715* (1576*)	345 (761)	335 (739)	495 (1091)

Tab. 3: Lifting force tables 1404 - Cabin and telescopic travel gear

A	Max.				3.0 m (9'10")				2.0 m (6'7")			
	Above blade		Above the side 360°		Above blade		Above the side 360°		Above blade		Above the side 360°	
	lowered	lifted	Telescopic travel gear retracted	Telescopic travel gear extended	lowered	lifted	Telescopic travel gear retracted	Telescopic travel gear extended	lowered	lifted	Telescopic travel gear retracted	Telescopic travel gear extended
1.5 m (4'11")	390* (860*)	205 (452)	200 (441)	280 (617)	415* (915*)	220 (485)	215 (474)	305 (672)	375* (827*)	375* (827*)	375* (827*)	375* (827*)
1.0 m (3'3")	375* (827*)	190 (419)	185 (408)	265 (584)	425* (937*)	215 (474)	210 (463)	300 (661)	575* (1268)	385 (849)	370 (816)	540 (1191)
0.5 m (1'8")	360* (794*)	185 (408)	180 (397)	255 (562)	410* (904*)	210 (463)	200 (441)	290 (639)	695* (1532*)	345 (761)	335 (739)	495 (1091)
0.0 m (0'0")	345* (761*)	185 (408)	180 (397)	260 (573)	400* (882*)	225 (496)	220 (485)	315 (695)	695* (1532*)	325 (717)	315 (695)	470 (1036)

Tab. 4: Lifting force tables 1404 – Cabin, telescopic travel gear and long dipper stick